

Sophisticated digital recording and networking engineered for high performance and reliability



ORDERING INFORMATION

See page 185 and 186 for more ordering information.

RECOMMENDED ACCESSORIES

| | |
|--------|---|
| V2111 | Keyboard, Dome & DVR Controller, Joystick, RS485 port, 120 VAC |
| V2111X | Keyboard, Dome & DVR Controller, Joystick, RS485 port, 230 VAC |

FEATURES

- Up to 16 Video/Audio Inputs (2 audio inputs for looping models)
- Main Monitor Output (1 channel VGA & 1 channel Composite Video)
- Up to 16 video looping outputs (for looping models)
- Auxiliary Monitor Output (Composite Video) for SATA models
- 2 audio outputs (main and auxiliary respectively) for SATA models
- 1 audio output for IDE models
- H.264 video and G.722 audio encoding technology
- Part 4 CIF at 30 fps. 4CIF, 2CIF, CIF, QCIF per input available
- Up to 16 alarm inputs and 4 relay outputs
- PTZ Control
- NTSC/PAL supported
- Up to 8 internal hard disks
- 1 External SATA Interface for storage for SATA models
- 1 USB Port
- Full Featured Keyboard Available
- Internal DVD writer (optional)
- Privacy masks and multi-area motion detection
- Video mask, video lost, motion detection, associated alarm
- Provide monitor alarm, audio alarm, upload control center, trigger alarm out
- Manual record, timing record, motion detect record, alarm input record
- Alarm pre-record and alarm relay functionality
- Adjustment of resolution, code flow, frame rate and image quality
- Video authentication watermark technology
- Search the record files according to the time, channel number, record type, support forward, backward, frame play mode
- Simultaneously records, transmits and displays live video while searching for and archiving video
- TCP/IP, UDP, PPPoE, DHCP, PPP etc.
- Standard mouse supported for Embedded GUI
- Bi-directional audio between the monitoring center and the local site (intercom)
- Multiple levels of access with password login
- Downloadable upgrades for products updating through USB
- Full featured client software and web browser interface included

DESCRIPTION

Infinova's V3011 series Network Digital Video Recorder provides uses with both IDE and SATA models.

Infinova's V3011 series Network Digital Video Recorder records a full motion (30 fps), high-resolution video (part channels up to 4-CIF) and audio (G.722) simultaneously on up to 16 inputs (2 channels for looping models). With a maximum of 8 affordable internal hard disks, very large local storage capacities (up to 6 TB) can be supported. An external disk expands via USB or SATA interface. High performance (H.264) hardware video encoders guarantee very high quality images with low storage requirements. The on-screen display (OSD) allows full programming and is easy to use. Two independent monitor outputs provide superior viewing options. The main output supports simultaneous VGA (up to 1024 x 768) and Composite (NTSC/PAL) signals. A second independent spot output provides additional versatile viewing options (for SATA models). The V3011 series DVRs automatically archive to the network PC storage when scheduled or on an alarmed event.

Infinova's V3011 series Network Digital Video Recorder can be remotely accessed through either a Local Area Network (LAN) or via a built-in web server. Dual Stream video encoding allows for low bitrate viewing.

Infinova's V3011 series Network Digital Video Recorder utilizes an embedded processor and embedded operating system for the highest possible reliability. The V3011 series DVRs function as both a Digital Video Recorder (DVR) and a Digital Video Server (DVS). All Infinova DVRs feature real-time hardware encoding of video and audio signals, local hard drive recording, real-time video/audio preview, video/audio switching functions, local recorded video file playback, real-time network transmission, remote file playback, scheduled download to a video server, or large-scale video storage unit for archiving.

SPECIFICATIONS

Video

| | |
|--------------------------|---|
| Video Encoding: | H.264 |
| Video Input: | up to 16 channels BNC (1.0 Vp-p, 75Ω) |
| Video Output: | 1 channel BNC (1.0 Vp-p, 75Ω) 1 channel VGA |
| Video Looping Output: | Up to 16 channels looping output (for looping models) |
| Video Auxiliary Output: | 1 channel BNC (1.0 Vp-p, 75Ω) for SATA models |
| VGA Resolution: | 800 X 600 / 60 Hz, 800 X 600 / 75 Hz, 1024 X 768 / 60Hz |
| Supported Formats: | PAL, NTSC |
| Preview Resolution: | |
| 1/5/9/13 Channel: | PAL: 4CIF (704 x 576), 2CIF (704 x 288), CIF (352 x 288), QCIF (176 x 144) NTSC: 4CIF (704 x 480), 2CIF (704 x 240), CIF (352 x 240), QCIF (176 x 120) |
| Another Channel: | PAL: 2CIF (704 x 288), CIF (352 x 288), QCIF (176 x 144) NTSC: 2CIF (704 x 240), CIF (352 x 240), QCIF (176 x 120) |
| Sub-Streaming: | CIF/QCIF |
| Frame Rate: | PAL: 1/16~25 fps, NTSC: 1/16~30 fps |
| Video Encoding Bit Rate: | 32 kbps ~ 2 Mbps, adjustable |

Audio

| | |
|---------------------------|---|
| Audio Encoding: | G.722 |
| Audio Input: | up to 16 channels 2 channels (for looping models) |
| Audio Output: | 1 channel 1 channel auxiliary audio output (for SATA models) |
| Linear Audio: | 1 input, monitor or talkback |
| Sampling Ratio: | 8 kHz |
| Encoding Output Bit Rate: | 16 kbps |

Interfaces

| | |
|-------------------|---|
| Network Port: | Ethernet port 10M/100M, RJ45 |
| Keyboard Port: | 2 RJ 45 ports, for IDE models 1 RS-485 port, Terminal Block for SATA models |
| PTZ Control Port: | 1 RS-485 port, RJ45 for IDE models 1 RS-485 port, Terminal Block for SATA models |
| Serial Ports: | RS-232 port, RJ45 |
| Alarm: | Up to 16 alarm inputs, 4 relay outputs |

Storage

| | |
|--------------------|--|
| Internal Storage: | |
| V3011 (With DVD): | 4 IDE hard disks maximum |
| V3011B (No DVD): | 8 IDE hard disks maximum |
| V3011A (No DVD): | 8 SATA hard disks maximum |
| V3011W (With DVD): | 4 SATA hard disks maximum |
| External Storage: | 1 external SATA port (eSATA) for SATA models 1 USB port |

Recording

| | |
|-------------------|---|
| Recording Modes: | 7 (Manually, Scheduled, Alarm, Motion detection, Motion detection & Alarm, Motion detection / Alarm, command trigger) |
| Image Encryption: | Watermark technology |

Network Capabilities

| | |
|-----------|---|
| Protocol: | IP, TCP, UDP, PPPoE, DHCP, PPP |
| Others: | Supports broadband dialing and narrow band transmission; transmit alarm signals through network |

Operation

| | |
|-------------------|--|
| Operating System: | Embedded VxWorks |
| Users: | Two levels of user authority management |
| Operation: | Front panel IR remote controller Mouse V2111, V2117 keyboard (Order separately) |

Electrical

| | |
|-----------------------|----------------------------|
| Input Voltage: | 110 ~ 230 VAC (50 ~ 60 Hz) |
| Power Consumption: | 44 W (not including HD) |
| Power Off Protection: | Power on self-recovery |

Mechanical

| | |
|---|--|
| Net Dimension (H x W x D): | 3.50" x 17.32" x 17.72" (89 mm x 440 mm x 450 mm) |
| Maximum Installation Dimension (H x W x D): | 3.70" x 17.56" x 18.11" (94 mm x 446 mm x 460 mm) 19-inch (2U) EIA rack mounting |

| | |
|---------|--------------------------------------|
| Weight: | 18.72 lbs. (8.5 kg) not including HD |
|---------|--------------------------------------|

Environmental

| | |
|------------------------|-----------------------------|
| Operating Temperature: | 14°F ~ 122°F (-10°C ~ 50°C) |
| Humidity: | 10~ 90% RH (non-condensing) |

V3011W/V3011A ORDERING INFORMATION

| V3011W Digital Video Recorders + DVD, SATA, 2CIF/D1, Video & Audio Inputs, Includes Remote Client Software | | | |
|---|---------|----------------|---------|
| 4 - Channel | | | |
| V3011W-4A-320 | 320 GB | V3011W-4A-2000 | 2000 GB |
| V3011W-4A-500 | 500 GB | V3011W-4A-3000 | 3000 GB |
| V3011W-4A-750 | 750 GB | V3011W-4A-4000 | 4000 GB |
| V3011W-4A-1000 | 1000 GB | | |
| 8 - Channel | | | |
| V3011W-8A-320 | 320 GB | V3011W-8A-2000 | 2000 GB |
| V3011W-8A-500 | 500 GB | V3011W-8A-3000 | 3000 GB |
| V3011W-8A-750 | 750 GB | V3011W-8A-4000 | 4000 GB |
| V3011W-8A-1000 | 1000 GB | | |
| 16 - Channel with Audio | | | |
| V3011W-16A-320 | 320 GB | V3011W-16A-200 | 2000 GB |
| V3011W-16A-500 | 500 GB | V3011W-16A-300 | 3000 GB |
| V3011W-16A-750 | 750 GB | V3011W-16A-400 | 4000 GB |
| V3011W-16A-100 | 1000 GB | | |
| V3011W Digital Video Recorders + DVD, SATA, 2CIF/D1, Video Input Looping, Includes Remote Client Software | | | |
| 4 - Channel | | | |
| V3011W-4L-320 | 320 GB | V3011W-4L-2000 | 2000 GB |
| V3011W-4L-500 | 500 GB | V3011W-4L-3000 | 3000 GB |
| V3011W-4L-750 | 750 GB | V3011W-4L-4000 | 4000 GB |
| V3011W-4L-1000 | 1000 GB | | |
| 8 - Channel | | | |
| V3011W-8L-320 | 320 GB | V3011W-8L-2000 | 2000 GB |
| V3011W-8L-500 | 500 GB | V3011W-8L-3000 | 3000 GB |
| V3011W-8L-750 | 750 GB | V3011W-8L-4000 | 4000 GB |
| V3011W-8L-1000 | 1000 GB | | |
| 16 - Channel | | | |
| V3011W-16L-320 | 320 GB | V3011W-16L-200 | 2000 GB |
| V3011W-16L-500 | 500 GB | V3011W-16L-300 | 3000 GB |
| V3011W-16L-750 | 750 GB | V3011W-16L-400 | 4000 GB |
| V3011W-16L-100 | 1000 GB | | |
| V3011A Digital Video Recorders, No DVD, SATA, 2CIF/D1, Video & Audio Inputs, Includes Remote Client Software | | | |
| 4 - Channel | | | |
| V3011A-4A-320 | 320 GB | V3011A-4A-4000 | 4000 GB |
| V3011A-4A-500 | 500 GB | V3011A-4A-5000 | 5000 GB |
| V3011A-4A-750 | 750 GB | V3011A-4A-6000 | 6000 GB |
| V3011A-4A-1000 | 1000 GB | V3011A-4A-7000 | 7000 GB |
| V3011A-4A-2000 | 2000 GB | V3011A-4A-8000 | 8000 GB |
| V3011A-4A-3000 | 3000 GB | | |
| 8 - Channel | | | |
| V3011A-8A-320 | 320 GB | V3011A-8A-4000 | 4000 GB |
| V3011A-8A-500 | 500 GB | V3011A-8A-5000 | 5000 GB |
| V3011A-8A-750 | 750 GB | V3011A-8A-6000 | 6000 GB |
| V3011A-8A-1000 | 1000 GB | V3011A-8A-7000 | 7000 GB |
| V3011A-8A-2000 | 2000 GB | V3011A-8A-8000 | 8000 GB |
| V3011A-8A-3000 | 3000 GB | | |

| 16 - Channel | | | |
|---|-------------------------|-----------------|---------|
| V3011A-16A-320 | 320 GB | V3011A-16A-4000 | 4000 GB |
| V3011A-16A-500 | 500 GB | V3011A-16A-5000 | 5000 GB |
| V3011A-16A-750 | 750 GB | V3011A-16A-6000 | 6000 GB |
| V3011A-16A-1000 | 1000 GB | V3011A-16A-7000 | 7000 GB |
| V3011A-16A-2000 | 2000 GB | V3011A-16A-8000 | 8000 GB |
| V3011A-16A-3000 | 3000 GB | | |
| V3011A Digital Video Recorders No DVD, SATA, 2CIF/D1, Video Input Looping, Includes Remote Client Software | | | |
| 4 - Channel | | | |
| V3011A-4L-320 | 320 GB | V3011A-4L-4000 | 4000 GB |
| V3011A-4L-500 | 500 GB | V3011A-4L-5000 | 5000 GB |
| V3011A-4L-750 | 750 GB | V3011A-4L-6000 | 6000 GB |
| V3011A-4L-1000 | 1000 GB | V3011A-4L-7000 | 7000 GB |
| V3011A-4L-2000 | 2000 GB | V3011A-4L-8000 | 8000 GB |
| V3011A-4L-3000 | 3000 GB | | |
| 8 - Channel | | | |
| V3011A-8L-320 | 320 GB | V3011A-8L-4000 | 4000 GB |
| V3011A-8L-500 | 500 GB | V3011A-8L-5000 | 5000 GB |
| V3011A-8L-750 | 750 GB | V3011A-8L-6000 | 6000 GB |
| V3011A-8L-1000 | 1000 GB | V3011A-8L-7000 | 7000 GB |
| V3011A-8L-2000 | 2000 GB | V3011A-8L-8000 | 8000 GB |
| V3011A-8L-3000 | 3000 GB | | |
| 16 - Channel | | | |
| V3011A-16L-320 | 320 GB | V3011A-16L-4000 | 4000 GB |
| V3011A-16L-500 | 500 GB | V3011A-16L-5000 | 5000 GB |
| V3011A-16L-750 | 750 GB | V3011A-16L-6000 | 6000 GB |
| V3011A-16L-1000 | 1000 GB | V3011A-16L-7000 | 7000 GB |
| V3011A-16L-2000 | 2000 GB | V3011A-16L-8000 | 8000 GB |
| V3011A-16L-3000 | 3000 GB | | |
| V3011W Diskless DVR - With DVD Writer, SATA, 2CIF/D1, No Hard Disks | | | |
| Note: Accepts up to 4 SATA 3.5" Drives | | | |
| V3011W-4A | 4 Ch. (4V + 4A) | | |
| V3011W-8A | 8 Ch. (8V + 8A) | | |
| V3011W-16A | 16 Ch. (16V + 16A) | | |
| V3011W-4L | 4 Ch. (Looping Inputs) | | |
| V3011W-8L | 8 Ch. (Looping Inputs) | | |
| V3011W-16L | 16 Ch. (Looping Inputs) | | |
| V3011A Diskless DVR - No DVD, SATA, 2CIF/D1, No Hard Disks Included | | | |
| Note: Accepts up to 8 SATA 3.5" Drives | | | |
| V3011A-4A | 4 Ch. (4V + 4A) | | |
| V3011A-8A | 8 Ch. (8V + 8A) | | |
| V3011A-16A | 16 Ch. (16V + 16A) | | |
| V3011A-4L | 4 Ch. (Looping Inputs) | | |
| V3011A-8L | 8 Ch. (Looping Inputs) | | |
| V3011A-16L | 16 Ch. (Looping Inputs) | | |

V3011/V3011B ORDERING INFORMATION

| | | | |
|--|---------|-----------------|---------|
| V3011 Digital Video Recorders + DVD, IDE, 2CIF/D1, Video & Audio Inputs, Includes Remote Client Software | | | |
| 4 - Channel | | | |
| V3011-4A-320 | 320 GB | V3011-4A-1500 | 1500 GB |
| V3011-4A-500 | 500 GB | V3011-4A-2000 | 2000 GB |
| V3011-4A-1000 | 1000 GB | | |
| 8 - Channel | | | |
| V3011-8A-320 | 320 GB | V3011-8A-1500 | 1500 GB |
| V3011-8A-500 | 500 GB | V3011-8A-2000 | 2000 GB |
| V3011-8A-1000 | 1000 GB | | |
| 12 - Channel | | | |
| V3011-12A-320 | 320 GB | V3011-12A-1500 | 1500 GB |
| V3011-12A-500 | 500 GB | V3011-12A-2000 | 2000 GB |
| V3011-12A-1000 | 1000 GB | | |
| 16 - Channel with Audio | | | |
| V3011-16A-320 | 320 GB | V3011-16A-1500 | 1500 GB |
| V3011-16A-500 | 500 GB | V3011-16A-2000 | 2000 GB |
| V3011-16A-1000 | 1000 GB | | |
| V3011 Digital Video Recorders + DVD, IDE, 2CIF/D1, Video Input Looping, Includes Remote Client Software | | | |
| 4 - Channel | | | |
| V3011-4L-320 | 320 GB | V3011-4L-1500 | 1500 GB |
| V3011-4L-500 | 500 GB | V3011-4L-2000 | 2000 GB |
| V3011-4L-1000 | 1000 GB | | |
| 8 - Channel | | | |
| V3011-8L-320 | 320 GB | V3011-8L-1500 | 1500 GB |
| V3011-8L-500 | 500 GB | V3011-8L-2000 | 2000 GB |
| V3011-8L-1000 | 1000 GB | | |
| 12 - Channel | | | |
| V3011-12L-320 | 320 GB | V3011-12L-1500 | 1500 GB |
| V3011-12L-500 | 500 GB | V3011-12L-2000 | 2000 GB |
| V3011-12L-1000 | 1000 GB | | |
| 16 - Channel | | | |
| V3011-16L-320 | 320 GB | V3011-16L-1500 | 1500 GB |
| V3011-16L-500 | 500 GB | V3011-16L-2000 | 2000 GB |
| V3011-16L-1000 | 1000 GB | | |
| V3011B Digital Video Recorders, No DVD, IDE, 2CIF/D1, Video & Audio Inputs, Includes Remote Client Software | | | |
| 4 - Channel | | | |
| V3011B-4A-320 | 320 GB | V3011B-4A-2500 | 2500 GB |
| V3011B-4A-500 | 500 GB | V3011B-4A-3000 | 3000 GB |
| V3011B-4A-1000 | 1000 GB | V3011B-4A-3500 | 3500 GB |
| V3011B-4A-1500 | 1500 GB | V3011B-4A-4000 | 4000 GB |
| V3011B-4A-2000 | 2000 GB | | |
| 8 - Channel | | | |
| V3011B-8A-320 | 320 GB | V3011B-8A-2500 | 2500 GB |
| V3011B-8A-500 | 500 GB | V3011B-8A-3000 | 3000 GB |
| V3011B-8A-1000 | 1000 GB | V3011B-8A-3500 | 3500 GB |
| V3011B-8A-1500 | 1500 GB | V3011B-8A-4000 | 4000 GB |
| V3011B-8A-2000 | 2000 GB | | |
| 12 - Channel | | | |
| V3011B-12A-320 | 320 GB | V3011B-12A-2500 | 2500 GB |
| V3011B-12A-500 | 500 GB | V3011B-12A-3000 | 3000 GB |
| V3011B-12A-1000 | 1000 GB | V3011B-12A-3500 | 3500 GB |
| V3011B-12A-1500 | 1500 GB | V3011B-12A-4000 | 4000 GB |
| V3011B-12A-2000 | 2000 GB | | |
| 16 - Channel | | | |
| V3011B-16A-320 | 320 GB | V3011B-16A-2500 | 2500 GB |
| V3011B-16A-500 | 500 GB | V3011B-16A-3000 | 3000 GB |
| V3011B-16A-1000 | 1000 GB | V3011B-16A-3500 | 3500 GB |
| V3011B-16A-1500 | 1500 GB | V3011B-16A-4000 | 4000 GB |
| V3011B-16A-2000 | 2000 GB | | |

| | | | |
|--|--------------------|-----------------|-------------------------|
| 12 - Channel | | | |
| V3011B-12A-320 | 320 GB | V3011B-12A-2500 | 2500 GB |
| V3011B-12A-500 | 500 GB | V3011B-12A-3000 | 3000 GB |
| V3011B-12A-1000 | 1000 GB | V3011B-12A-3500 | 3500 GB |
| V3011B-12A-1500 | 1500 GB | V3011B-12A-4000 | 4000 GB |
| V3011B-12A-2000 | 2000 GB | | |
| 16 - Channel | | | |
| V3011B-16A-320 | 320 GB | V3011B-16A-2500 | 2500 GB |
| V3011B-16A-500 | 500 GB | V3011B-16A-3000 | 3000 GB |
| V3011B-16A-1000 | 1000 GB | V3011B-16A-3500 | 3500 GB |
| V3011B-16A-1500 | 1500 GB | V3011B-16A-4000 | 4000 GB |
| V3011B-16A-2000 | 2000 GB | | |
| V3011B Digital Video Recorders No DVD, IDE, 2CIF/D1, Video Input Looping, Includes Remote Client Software | | | |
| 4 - Channel | | | |
| V3011B-4L-320 | 320 GB | V3011B-4L-2500 | 2500 GB |
| V3011B-4L-500 | 500 GB | V3011B-4L-3000 | 3000 GB |
| V3011B-4L-1000 | 1000 GB | V3011B-4L-3500 | 3500 GB |
| V3011B-4L-1500 | 1500 GB | V3011B-4L-4000 | 4000 GB |
| V3011B-4L-2000 | 2000 GB | | |
| 8 - Channel | | | |
| V3011B-8L-320 | 320 GB | V3011B-8L-2500 | 2500 GB |
| V3011B-8L-500 | 500 GB | V3011B-8L-3000 | 3000 GB |
| V3011B-8L-1000 | 1000 GB | V3011B-8L-3500 | 3500 GB |
| V3011B-8L-1500 | 1500 GB | V3011B-8L-4000 | 4000 GB |
| V3011B-8L-2000 | 2000 GB | | |
| 12 - Channel | | | |
| V3011B-12L-320 | 320 GB | V3011B-12L-2500 | 2500 GB |
| V3011B-12L-500 | 500 GB | V3011B-12L-3000 | 3000 GB |
| V3011B-12L-1000 | 1000 GB | V3011B-12L-3500 | 3500 GB |
| V3011B-12L-1500 | 1500 GB | V3011B-12L-4000 | 4000 GB |
| V3011B-12L-2000 | 2000 GB | | |
| 16 - Channel | | | |
| V3011B-16L-320 | 320 GB | V3011B-16L-2500 | 2500 GB |
| V3011B-16L-500 | 500 GB | V3011B-16L-3000 | 3000 GB |
| V3011B-16L-1000 | 1000 GB | V3011B-16L-3500 | 3500 GB |
| V3011B-16L-1500 | 1500 GB | V3011B-16L-4000 | 4000 GB |
| V3011B-16L-2000 | 2000 GB | | |
| V3011 Diskless DVR - With DVD Writer, IDE, 2CIF/D1, No Hard Disks Included | | | |
| Note: Accepts up to 4 IDE 3.5" Drives | | | |
| V3011-4A | 4 Ch. (4V+4A) | V3011-4L | 4 Ch. (Looping Inputs) |
| V3011-8A | 8 Ch. (8V+8A) | V3011-8L | 8 Ch. (Looping Inputs) |
| V3011-12A | 12 Ch. (12V+12A) | V3011-12L | 12 Ch. (Looping Inputs) |
| V3011-16A | 16 Ch. (16V + 16A) | V3011-16L | 16 Ch. (Looping Inputs) |
| V3011B Diskless DVR - No DVD, IDE, 2CIF/D1, No Hard Disks Included | | | |
| Note: Accepts up to 8 IDE 3.5" Drives | | | |
| V3011B-4A | 4 Ch. (4V + 4A) | V3011B-4L | 4 Ch. (Looping Inputs) |
| V3011B-8A | 8 Ch. (8V + 8A) | V3011B-8L | 8 Ch. (Looping Inputs) |
| V3011B-12A | 12 Ch. (12V+12A) | V3011B-12 | 12 Ch. (Looping Inputs) |
| V3011B-16A | 16 Ch. (16V+16A) | V3011B-16 | 16 Ch. (Looping Inputs) |

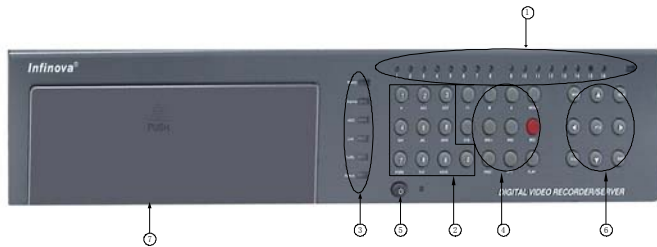
HARD DISKS ORDERING INFORMATION

| | |
|-------------|-----------------|
| V3091/320 | IDE HD, 320 GB |
| V3091/500 | IDE HD, 500 GB |
| V3091-320S | SATA HD, 320GB |
| V3091-500S | SATA HD, 500GB |
| V3091-750S | SATA HD, 750GB |
| V3091-1000S | SATA HD, 1000GB |

Internal DVD Drives ORDERING INFORMATION

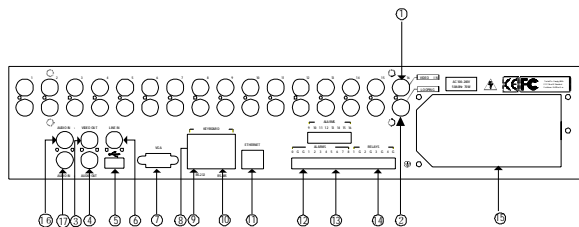
| | |
|--------|-------------------------------------|
| V3094I | DVD Writer, Internal IDE Interface |
| V3094S | DVD Writer, Internal SATA Interface |

FRONT PANEL VIEW



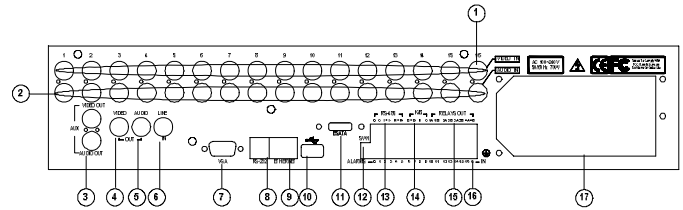
1. Channel Indicator Light
2. Numeric Keyboard Buttons
3. System Indicator Light
4. System Control Buttons
5. On/Off Power Button
6. PTZ Control / Menu Control Buttons
7. Internal DVR writer (V3011W and V3011 available)

16 CHANNEL REAR PANEL FOR IDE MODELS (LOOPING MODEL)



- | | |
|-------------------|-------------------------------------|
| 1. Video inputs | 9. RS-232 port |
| 2. Looping inputs | 10. RS-485 port |
| 3. Video outputs | 11. 10M/100M Ethernet port |
| 4. Audio output | 12. GND |
| 5. USB interface | 13. Alarm inputs (16 inputs) |
| 6. Line in | 14. Relay outputs (4 outputs) & GND |
| 7. VGA interface | 15. Power supply and fan |
| 8. Keyboard port | 16.&17.Audio inputs |

16 CHANNEL REAR PANEL FOR SATA MODELS (NON -LOOPING MODEL)



1. Video Inputs (16)
2. Audio Inputs (16)
3. Auxiliary Monitor Video Output (Composite) & Audio Output
4. Main Monitor Video Output (Composite)
5. Main Monitor Audio Output
6. Audio Line-In for Intercom
7. Main Monitor Output (VGA)
8. RS-232 Serial Port
9. Ethernet Port
10. USB Port
11. ESATA - External SATA Port
12. RS-485 DIP Switch
13. RS-485 Port (PTZ Control)
14. Keyboard Port (RS-485)
15. Alarm Outputs (4)
16. Alarm Inputs (16)
17. Power Supply & Fan

TYPICAL SYSTEM CONNECTIONS

