

### High Resolution, Full Motion Network DVR with 8 or 16 Channels, H.264 4CIF at 30/25 fps



#### ORDERING INFORMATION

See page 190 for more information

#### HARD DRIVE ORDERING INFORMATION

V3091-320S	SATA HD, 320 GB
V3091-500S	SATA HD, 500 GB
V3091-750S	SATA HD, 750 GB
V3091-1000S	SATA HD, 1000 GB

#### RECOMMENDED ACCESSORIES

V2111	Keyboard, Dome and DVR Controller, Joystick, RS485 port, 120 VAC
V2111X	Keyboard, Dome and DVR Controller, Joystick, RS485 port, 230 VAC

#### FEATURES

- Up to 16 Video/Audio Inputs (2 audio inputs for looping models)
- Main Monitor Output (VGA & Composite Video)
- Up to 16 video looping outputs (for looping models)
- Auxiliary Monitor Output (Composite Video)
- 2 audio outputs (main and auxiliary respectively)
- H.264 video and G.722 audio encoding technology
- Full 4 CIF at 30 fps.
- Select from 4CIF, 2CIF, CIF, QCIF per input
- 16 alarm inputs
- 4 relay outputs
- PTZ Control
- NTSC/PAL supported
- Up to 8 internal hard disks
- 1 External SATA Interface for storage.
- 1 USB Port
- Full Featured Keyboard Available
- Internal DVD writer (optional)
- Privacy masks and multi-area motion detection
- Supports video mask, video lost, motion detection, associated alarm
- Provide monitor alarm, audio alarm, upload control center, trigger alarm out
- Manual record, timing record, motion detect record, alarm input record
- Alarm pre-record and alarm relay functionality
- Adjustment of resolution, code flow, frame rate and image quality
- Video authentication watermark technology
- Search the recorded files according to the time, channel no., record type, support forward, backward, frame play mode
- Simultaneously records, transmits and displays live video while searching for and archiving video

#### DESCRIPTION

Infinova's V3013 series Network Digital Video Recorder records a full motion (30 fps), high-resolution video (4-CIF) and audio (G.722) simultaneously on 8 or 16 inputs (2 channels for looping models). Affordable (SATA) internal hard disks (up to 8) can support very large local storage capacities (up to 6 TB). An external disk can expand via SATA interface. High performance (H.264) hardware video encoders guarantee very high quality images with low storage requirements. The easy to use on screen display (OSD) allows full programming. Two independent monitor outputs provide superior viewing options. The main output supports simultaneous VGA (up to 1024 x 768) and Composite (NTSC/PAL) signals. A second independent spot output provides additional versatile viewing options. These DVR's will automatically archive to network PC storage when scheduled or on an alarmed event.

Infinova's V3013 series Network Digital Video Recorder can be remotely accessed through either a Local Area Network (LAN) or via a built-in web server. Dual Stream video encoding allows for low bitrate viewing.

Infinova's V3013 series utilizes an embedded processor and embedded operating system for the highest possible reliability. The Infinova DVR functions as both a Digital Video Recorder (DVR) and Digital Video Server (DVS). All Infinova DVRs feature real-time hardware encoding of video and audio signals, local hard drive recording, real-time video/audio preview, video/audio switching functions, local recorded video file playback, real-time network transmission, remote file playback, scheduled download to a video server, or large-scale video storage unit for archiving.

#### FEATURES (CONTINUED)

- TCP/IP, UDP, PPPoE, DHCP, PPP etc.
- Standard mouse supported for Embedded GUI
- Bi-directional audio between the monitoring center and the local site (intercom)
- Multiple levels of access with password login
- Downloadable upgrades for products updating through USB
- Full featured client software and web browser interface included
- 19-inch EIA (2U) rack mount included

### SPECIFICATIONS

#### Video

Video Encoding: H.264  
Video Input: 8 or 16 channels BNC (1.0 Vp-p, 75Ω)  
Video Output: 1 channel BNC (1.0 Vp-p, 75Ω)  
1 channel VGA  
8/16 looping output (for looping models)  
Video Auxiliary Output: 1 channel BNC (1.0 Vp-p, 75Ω)

VGA Resolution: 800 X 600 / 60 Hz, 800 X 600 / 75 Hz,  
1024 X 768 / 60Hz

Supported Formats: PAL, NTSC  
Preview Resolution: 4CIF (704 X 576) (PAL);  
4CIF (704 X 480) (NTSC)

Recording Rate Per Channel:  
PAL: 4CIF (704 X 576), DCIF (528 X 384),  
2CIF (704 X 288), CIF (352 X 288),  
QCIF (176 X 144)  
NTSC: 4CIF (704 X 480), DCIF (528 X 320),  
2CIF (704 X 240), CIF (352 X 240),  
QCIF (176 X 120)  
Frame Rate: PAL: 1/16~25 fps,  
NTSC: 1/16~30 fps  
Video Encoding Bit Rate: 32 kbps ~2 Mbps, adjustable

#### Audio

Audio Encoding: G.722  
Audio Input: 8 or 16 channels  
2 channels (for looping models)  
Audio Output: 1 channel  
1 channel auxiliary audio output  
Linear Audio: 1 input, monitor or talkback  
Sampling Ratio: 8 kHz  
Encoding Output Bit Rate: 16 kbps

#### Interfaces

Network Port: Ethernet port 10M/100M, RJ45  
Keyboard Port: RS-485 port, Terminal Block  
PTZ Control Port: RS-485 port, Terminal Block  
Serial Ports: RS-232 port, RJ45  
Alarm: 16 alarm inputs, 4 relay outputs,  
Terminal Block

#### Storage

Internal Storage:  
V3013A (No DVD): 8 SATA hard disks maximum  
V3013W (With DVD): 4 SATA hard disks maximum  
External Storage: 1 external SATA port (eSATA)  
1 USB port

#### Recording

Recording Modes: 7 (Manually, Scheduled, Alarm, Motion  
detection, Motion detection & Alarm,  
Motion detection / Alarm,  
command trigger)  
Image Encryption: Watermark technology

#### Network capabilities

Protocol: IP, TCP, UDP, PPPoE, DHCP, PPP  
Others: Supports broadband dialing and narrow  
band transmission; transmit alarm  
signals through network

#### Operation

Operating System: Embedded VxWorks  
Users: Two management levels of user  
Operation: Front panel, IR remote controller, mouse  
or V 2111, V2117 keyboard

#### Electrical

Input Voltage: 110 ~ 230 VAC (50 ~ 60 Hz)  
Power Consumption: 64 W (not including HD)  
Power Off Protection: Power on self-recovery

#### Mechanical

Net Dimension (HxWxD): 3.50" × 17.32" × 17.72"  
(89 mm×440 mm×450 mm)  
Maximum Installation  
Dimension (HxWxD): 3.70" × 17.56"×18.11"  
(94 mm×446 mm×460 mm)  
19-inch (2U) EIA rack mounting

Weight: 18.72 lbs. (8.5 kg) not including HD

#### Environmental

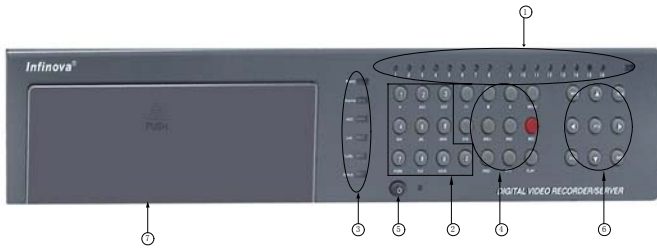
Operating Temperature: 14°F ~ 122°F (-10°C ~ 50°C)  
Humidity: 10~ 90% RH (non-condensing)

### ORDERING INFORMATION

V3013W Digital Video Recorders + DVD, SATA, D1, Video & Audio Inputs, Includes Remote Client Software			
<b>8 - Channel</b>			
V3013W-8A-320	320 GB	V3013W-8A-2000	2000 GB
V3013W-8A-500	500 GB	V3013W-8A-3000	3000 GB
V3013W-8A-750	750 GB	V3013W-8A-4000	4000 GB
V3013W-8A-1000	1000 GB		
<b>16 - Channel</b>			
V3013W-16A-320	320 GB	V3013W-16A-2000	2000 GB
V3013W-16A-500	500 GB	V3013W-16A-3000	3000 GB
V3013W-16A-750	750 GB	V3013W-16A-4000	4000 GB
V3013W-16A-1000	1000 GB		
V3013A Digital Video Recorders, No DVD, SATA, D1, Video & Audio Inputs, Includes Remote Client Software			
<b>8 - Channel</b>			
V3013A-8A-320	320 GB	V3013A-8A-4000	4000 GB
V3013A-8A-500	500 GB	V3013A-8A-5000	5000 GB
V3013A-8A-750	750 GB	V3013A-8A-6000	6000 GB
V3013A-8A-1000	1000 GB	V3013A-8A-7000	7000 GB
V3013A-8A-2000	2000 GB	V3013A-8A-8000	8000 GB
V3013A-8A-3000	3000 GB		
<b>16 - Channel</b>			
V3013A-16A-320	320 GB	V3013A-16A-4000	4000 GB
V3013A-16A-500	500 GB	V3013A-16A-5000	5000 GB
V3013A-16A-750	750 GB	V3013A-16A-6000	6000 GB
V3013A-16A-1000	1000 GB	V3013A-16A-7000	7000 GB
V3013A-16A-2000	2000 GB	V3013A-16A-8000	8000 GB
V3013A-16A-3000	3000 GB		

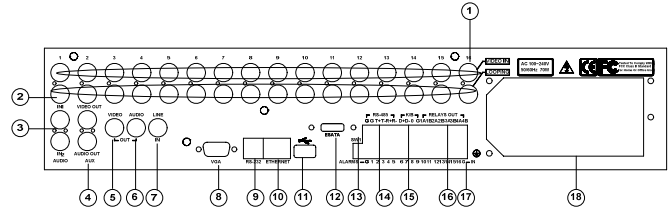
V3013W Digital Video Recorders + DVD, SATA, D1, Video Input Looping, Includes Remote Client Software			
<b>8 - Channel</b>			
V3013W-8L-320	320 GB	V3013W-8L-2000	2000 GB
V3013W-8L-500	500 GB	V3013W-8L-3000	3000 GB
V3013W-8L-750	750 GB	V3013W-8L-4000	4000 GB
V3013W-8L-1000	1000 GB		
<b>16 - Channel</b>			
V3013W-16L-320	320 GB	V3013W-16L-2000	2000 GB
V3013W-16L-500	500 GB	V3013W-16L-3000	3000 GB
V3013W-16L-750	750 GB	V3013W-16L-4000	4000 GB
V3013W-16L-1000	1000 GB		
V3013A Digital Video Recorders No DVD, SATA, D1, Video Input Looping, Includes Remote Client Software			
<b>8 - Channel</b>			
V3013A-8L-320	320 GB	V3013A-8L-4000	4000 GB
V3013A-8L-500	500 GB	V3013A-8L-5000	5000 GB
V3013A-8L-750	750 GB	V3013A-8L-6000	6000 GB
V3013A-8L-1000	1000 GB	V3013A-8L-7000	7000 GB
V3013A-8L-2000	2000 GB	V3013A-8L-8000	8000 GB
V3013A-8L-3000	3000 GB		
<b>16 - Channel</b>			
V3013A-16L-320	320 GB	V3013A-16L-4000	4000 GB
V3013A-16L-500	500 GB	V3013A-16L-5000	5000 GB
V3013A-16L-750	750 GB	V3013A-16L-6000	6000 GB
V3013A-16L-1000	1000 GB	V3013A-16L-7000	7000 GB
V3013A-16L-2000	2000 GB	V3013A-16L-8000	8000 GB
V3013A-16L-3000	3000 GB		
V3013W Diskless DVR Chassis With DVD Writer, SATA, D1, No Hard Disks			
<b>Note: Accepts up to 4 SATA 3.5" Drives</b>			
V3013W-8A	8 Ch. (8V + 8A)		
V3013W-16A	16 Ch. (16V + 16A)		
V3013W-8L	8 Ch. (Looping Inputs)		
V3013W-16L	16 Ch. (Looping Inputs)		
V3013A Diskless DVR Chassis, No DVD, SATA, D1, No Hard Disks Included			
<b>Note: Accepts up to 8 SATA 3.5" Drives</b>			
V3013A-8A	8 Ch. (8V + 8A)		
V3013A-16A	16 Ch. (16V + 16A)		
V3013A-8L	8 Ch. (Looping Inputs)		
V3013A-16L	16 Ch. (Looping Inputs)		

### FRONT PANEL VIEW



1. Channel Indicator Light
2. Numeric Keyboard Buttons
3. System Indicator Light
4. System Control Buttons
5. On/Off Power Button
6. PTZ Control / Menu Control Buttons
7. Internal DVR writer (V3013W only)

### V3013 REAR PANEL (LOOPING MODEL)



1. Video Inputs (16)
2. Video looping outputs(16)
3. Audio Inputs (2)
4. Auxiliary Monitor Video Output (Composite) & Audio Output
5. Main Monitor Video Output (Composite)
6. Main Monitor Audio Output
7. Audio Line-In for Intercom
8. Main Monitor Output (VGA)
9. RS-232 Serial Port
10. Ethernet Port
11. USB Port
12. ESATA - External SATA Port
13. RS-485 DIP Switch
14. RS-485 Port (PTZ Control)
15. Keyboard Port (RS-485)
16. Alarm Outputs (4)
17. Alarm Inputs (16)
18. Power Supply & Fan

### TYPICAL SYSTEM CONNECTIONS

